

AICP Examination Illustrative Questions

The following questions illustrate the style of questions and answers in the multiple-choice examination. These questions are not in the examination and do not represent the range of content or the level of difficulty of the questions that are on the examination. They show only the different forms that questions take. You will find an answer key at the end of the document.

Directions:

Each of the questions or incomplete statements below is followed by four suggested answers or completions.

1. A small nonprofit is considering restructuring its organization to enhance internal communications. What type of organizational structure would be most appropriate?

- A. Hierarchical
- B. Flat
- C. Matrix
- D. Flexible

2. The Federal Highway Administration's functional classification system for roads and highways include all of the following EXCEPT?

- A. Interstate
- B. Arterial
- C. Collector
- D. Local

3. Typical public health topics in the comprehensive plan include:

- I. Aging
 - II. Active transportation
 - III. Planned Parenthood
 - IV. Environmental health
- A. I and II only
 - B. II and IV only
 - C. I, II, and IV only
 - D. All of above

4. The following equation illustrates the demographic concept of:

$$\frac{(\text{Population under 18} + \text{Population 65 and Above})}{\text{Population 18-64}}$$

- A. Dissimilarity index
- B. Cohort survival
- C. Dependency rate
- D. Mortality rate

5. Listed below are local and national employment percentages for industries X, Y, and Z in a metropolitan area. The local employment for each industry represents a percent of total local employment, and the national employment in each industry represents a percent of total national employment. Under the Location Quotient method, an economic planner can assign which of these industries to the export sector of the metropolitan area?

Industry	Local Employment	National Employment
X	3%	6%
Y	10%	7%
Z	11%	3%

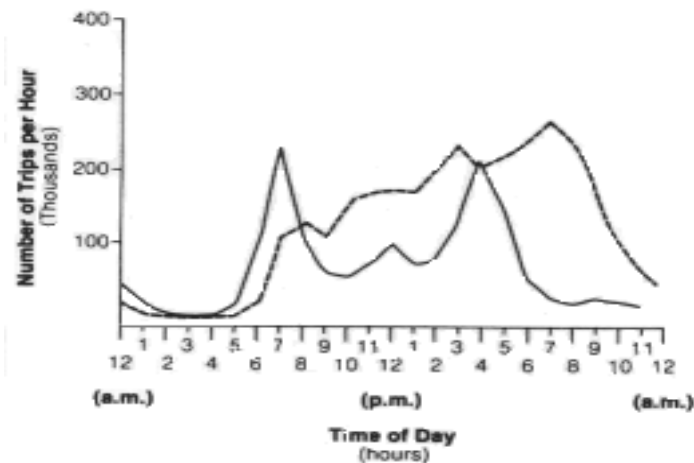
- A. X only
- B. Y only
- C. Z only
- D. Y and Z only

6. A community with an aging population is reconsidering its land use and housing policies to promote aging in place. Such considerations may include:

- I. Promoting granny flats
 - II. Relaxing development standards for nursing homes
 - III. Improving transit services to residential neighborhoods
 - IV. Providing loans and grants for accessibility improvements at homes
- A. I and IV only
 - B. I, II, and III only
 - C. I, III, and IV only
 - D. All of above

7. Cap parks are:

- A. Parks with specific functional capacity
- B. Portable parks
- C. Parks that incorporate solar energy use
- D. Parks built over segments of freeways



8. The two lines on the graph above best represent which of the following combinations of travel behavior in a metropolitan area of 2 million population?

- A. Transit and private automobile trips
- B. Weekday and weekend trips
- C. Work and non-work trips
- D. Office- and retail-generated trips

The next two questions refer to the following information. The desirability and feasibility of a proposed shopping center are to be evaluated. The primary concerns are that conditions of the city zoning ordinance be met and that the project be a profitable venture. The developer owns a 30-acre parcel and proposes to construct a 250,000-square-foot leasable area with 1,300 on-site parking spaces. The shopping center will serve a trade area that contains 20,000 households. The average household disposable income is \$12,000. The shopping center will have a 50:50 split of square footage between convenience and shoppers' goods.

9. Which of the following would be appropriate in a shopping center of this size?

- A. A major grocery and a drug store as prime tenants
- B. Either a department or discount store as the anchor tenant
- C. Three department stores of approximately the same size
- D. A series of smaller stores rather than an anchor tenant

10. If an average of 400 square feet is needed to accommodate each parking space and associated driveways, what would be the approximate acreage of the blacktop area of the site?

- A. Less than 10 acres
- B. Between 10 and 15 acres
- C. Between 15 and 20 acres
- D. More than 20 acres

11. In preparing a physical plan for a site within an urban center, which of the following types of maps would be LEAST useful?

- A. Topographic map
- B. Utilities map
- C. Census Map
- D. Parcel map

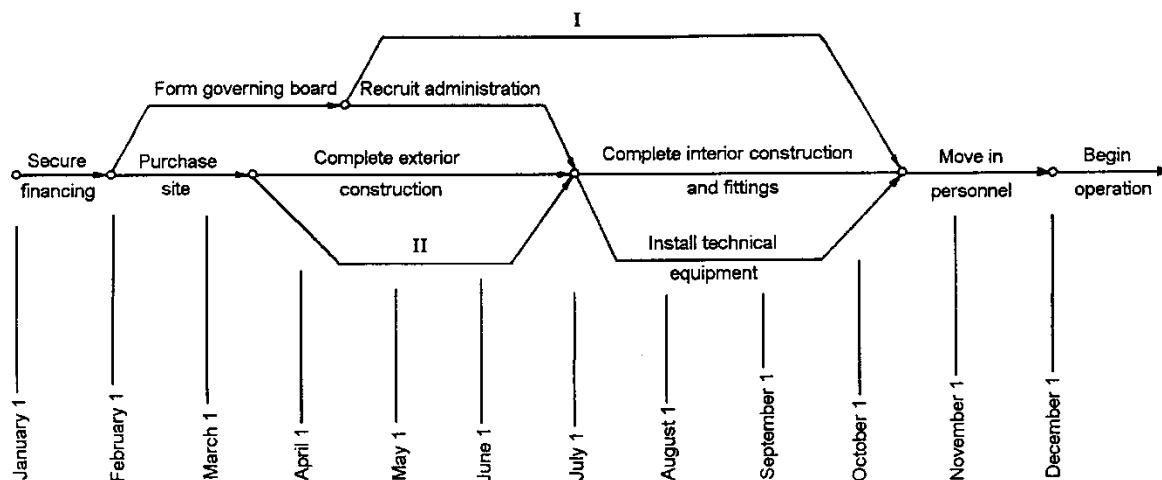
12. The location of cellular phone towers is determined by which of the following?

- A. The Federal Communications Commission
- B. State utilities commissions
- C. Local government jurisdictions
- D. Metropolitan planning organizations

13. The rational comprehensive method for decision making requires all of the following EXCEPT:

- A. clarification of values
- B. consideration of extensive data
- C. anecdotal information
- D. consideration of all relevant factors

The next two questions refer to the implementation schedule illustrated in the chart below.

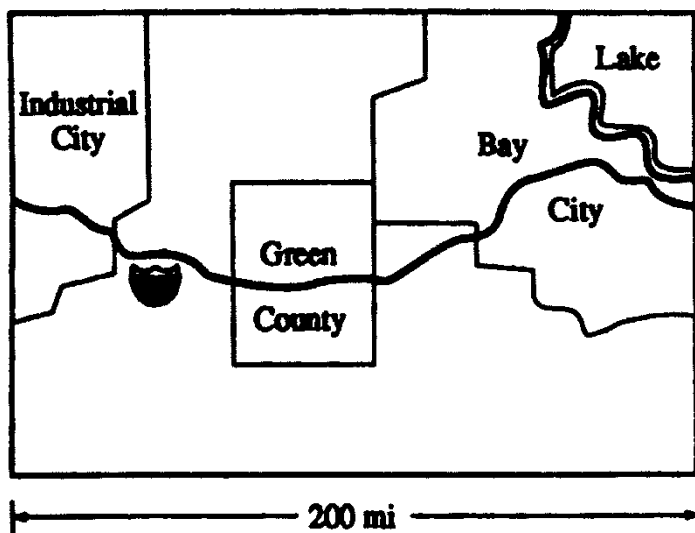


14. Line II on the chart above indicates the best time to?

- A. order equipment
- B. calculate annual operating costs
- C. hire operational staff
- D. publicize the project to generate public use

15. Which of the following types of buildings does the implementation schedule above most probably imply?

- A. A municipal police station
- B. A community-based health clinic
- C. A waste-disposal facility
- D. A shopping center



16. Green County, shown in the map above, contains some of the best farmland in the state. Which of the following steps should the Green County planner recommend to protect this valuable farmland from industrial or commercial development?

- A. Zone all of Green County as farmland and invite farmers to be members of the zoning board of appeals.
- B. Propose a moratorium on sewer connections for Green County.
- C. Identify priority farmland areas in Green County and modify the zoning ordinances appropriately.
- D. Promote construction of another limited access highway between Industrial City and Bay City to lower development pressures.

17. Detailed information about a community's debt would be vital for carrying out which of the following tasks?

- A. Establishing assessed values for property in the coming year
- B. Applying to HUD for Section 8 funds
- C. Presenting a venture-capital fund to area financial institutions
- D. Requesting a change in bond rating

18. Which of the following land-use models describes the pattern of axial growth along lines of least resistance?

- A. Multiple nuclei model
- B. Concentric zone model
- C. Sector model
- D. Negative exponential population density model

19. The planning director of a small city wants to get as much public input as possible on a city-wide study. Which of the following would be the LEAST effective method of stimulating citizen participation?

- A. Contacting neighborhood leaders, advising them of the study, and asking them to report neighborhood reaction
- B. Completing a draft of the study, printing the draft report, and asking for citizen comments on it
- C. Preparing press releases that give the general scope of the study and asking for comments from the general public
- D. Offering to address interested neighborhood or other civic groups on the subject of the study

20. A SmartCode Transect:

- I. Typically contains seven zones from Rural to Urban
 - II. Is a way of locating and understanding a variety of different types of human settlement within a comprehensive web of natural and human habitats
 - III. Has a historical linkage to Geddes' Valley Section
 - IV. Has its origins in Howards' Garden Cities concept
- A. I, III
 - B. I, IV
 - C. II, III
 - D. I, II, III, IV

21. Strategies to help combat climate change by planners involve the following:

- I. GHG Reduction
 - II. Increasing VMT
 - III. Adaptive Reuse
 - IV. Water Conservation
- A. II
 - B. I, III, IV
 - C. I, II, III
 - D. I, II, III, IV

22. The Planning Director for Geneva asks you put together a new general plan for the city. Some of the following steps you'd propose to undertake would occur in the following order:

- I. Preparing plan
 - II. Collecting data and analysis
 - III. Identifying issues and stakeholders
 - IV. Stating Goals, Objectives and Priorities
- A. II, IV, III, I
 - B. I, II, III, IV
 - C. III, IV, II, I
 - D. III, II, IV, I

23. The County Manager asks you, as Planning Director, to implement a new Smart Growth program for the county. Your program would include considerations of the following:

- I. Efficient use of land and infrastructure
 - II. Well defined community edges, such as agricultural greenbelts, wildlife corridors or greenways
 - III. Vital small towns and rural areas
 - IV. Creation of a sense of place
- A. I, II
 - B. I, II, III
 - C. III, IV
 - D. I, II, III, IV

24. Which of the following factors contribute to global unsustainability?

- I. Pollution Controls
 - II. Resource Inequities
 - III. Renewable Resources
 - IV. Population Growth
- A. II, IV
 - B. I, II, IV
 - C. I, III, IV
 - D. II, III, I

25. The Connectivity Index is generally calculated as:

- A. Street miles/Square Mile
- B. # Streets/Square Mile
- C. Collectors/Arterials
- D. Links/Nodes

26. New Urbanism principles include all the following, except:

- A. Neighborhood unit cul-de-sacs
- B. Compact, walkable neighborhoods
- C. Preservation and renewal of historic buildings
- D. A range of parks, from tot-lots to ball fields

27. The most appropriate method to eliminate an existing adult use is:

- A. A taking
- B. A moratorium
- C. An amortization
- D. A non-conforming use

28. NEPA identifies which of the following big questions that must be addressed in an Environmental Impact Statements.

- 1. The purpose of the Environmental Impact Statement;
- 2. Environmental consequences of the proposed action;
- 3. Alternatives to the proposed action;
- 4. The relationship between local short-term uses of man's environment and the maintenance and enhancement of long-term productivity

- A. 1, 2
- B. 1, 2, 3
- C. 1, 2, 4
- D. 1, 2, 3, 4

29. Power Towns are likely to include:

- A. Big box retail and a discount store
- B. Anchor department stores with a lifestyle center
- C. Less square footage than a Power Center, but with more specialty retail
- D. Extensive office and hotel square footage

30. The Washington, D.C. greater mall area is an example of:

- A. City Beautiful
- B. Garden Cities
- C. City Functional
- D. City Efficient

31. The Planning Director asks you to devise a plan to increase destination accessibility within the James neighborhood. Your planning effort primarily involves principles of:

- I. Sustainability
 - II. Connectivity
 - III. Complete Streets
 - IV. Comprehensive planning
- A. II, III, IV
 - B. II, III
 - C. I, IV
 - D. I, II, III, IV

32. A 2.5-acre downtown site is approved with a FAR of 6. Approximately how many stories of building could be built on an acre of the site, if 60% of the site will be required for onsite stormwater treatment, parking, sidewalks and landscaping?

- A. 6 stories
- B. 10 stories
- C. 15 stories
- D. 22 stories

33. The mayor asks the Planning Director to make planning decisions that promote job growth in the local economy. A metric that you plan to use to forecast the resulting economic growth in your community for specific planning decisions is a:

- A. Location Quotient
- B. Benefit-Cost analysis
- C. Multiplier
- D. Cost Effectiveness analysis

34. The Disaster Mitigation Act of 2000 required local governments to address potential hazards in a Hazard Mitigation Plan in order to remain eligible to receive certain federal funds before and following federally-declared disasters. Your coastal community has adopted such a plan in the Safety Element of your General Plan and it addresses:

- I. Natural hazards
 - II. Man-made hazards
 - III. Fiscal responsibility for disasters
 - IV. No new development in low-lying environmental sensitive coastal areas
- A. II, III
 - B. I, II, IV
 - C. I, IV
 - D. I, II, III, IV

35. Superblock is a concept most often associated with:

- I. Le Corbusier's Radiant City
 - II. Clarence Perry's "Neighborhood Unit"
 - III. Radburn, New Jersey
 - IV. Urban renewal public housing projects
-
- A. I, IV
 - B. I, III, IV
 - C. II, III, IV
 - D. I, II, III, IV

36. Right-to-farm laws are typically about:

- A. Governmental takings
- B. Coming to the nuisance
- C. Combating urban sprawl
- D. Agricultural inverse condemnation

37. The Utopianism theory of planning is often linked to works by:

- I. Le Corbusier
 - II. Daniel Burnham
 - III. Frank Lloyd Wright
 - IV. Charles Lindblom
-
- A. I, II
 - B. I, III
 - C. II, III, IV
 - D. I, II, III, IV

38. According to Harvey Molotch, likely the most important factor affecting the shape of the city is:

- A. Public planning
- B. Real estate interests
- C. Transportation improvements
- D. Local banking interests

39. You are the planner for Newton City who is responsible for converting the city's current zoning code into a form-based code. Components of the code you are developing contain standards addressing:

- I. Building configuration and features
 - II. Building type and frontage
 - III. Public spaces
 - IV. Land use
- A. I
 - B. II
 - C. I, II
 - D. I, II, III, IV

40. Johnson County is proposing to develop a major new airport near the Johnsonville city limits. You are in charge of revising the county's comprehensive plan to address airport safety and compatible land uses. The typically incompatible land uses near the end of the airport's new runways would be:

- I. Residential development
 - II. Places of worship
 - III. Golf courses
 - IV. Open, mowed grasslands
- A. I
 - B. I, II
 - C. I, II, III
 - D. I, II, III, IV

41. Orange County is quickly losing its prime agricultural lands to new suburban development. Among the planning tools your Planning Director wishes to utilize to help protect agricultural lands is a TDR program. The potential use of this tool for agricultural protection will likely involve you in a discussion of the legal principles established in:

- I. Penn Central Transportation Co. v. The City of New York (1978)
 - II. Spur Industries v. Del Webb Development Co. (1972)
 - III. Village of Euclid v. Ambler Realty (1926)
 - IV. Fred F. French Investing Co. v. City of New York (1976)
- A. I
 - B. II
 - C. II, III
 - D. I, IV

42. The Mayor established a citizen's advisory group to provide recommendations to the Town Council on the siting of new religious institutions within the rural community that includes an agricultural reserve area. The planning staff has been asked to help support the advisory group on the requirements and restrictions allowed under the federal Religious Land Use and Institutionalized Persons Act (RLUIPA). Which of the following draft recommendations would you identify to discuss with the citizen's advisory group as potentially being problematic under RLUIPA:

- I. Exclude all religious institutions from the central business district
 - II. Establish a minimum 1,000-foot buffer requirement between nonagricultural, nonresidential uses in an agricultural district "to protect, preserve, and enhance the rural character and lifestyle of existing low-density areas and agricultural use"
 - III. Establish a conditional use approval process for religious institutions
 - IV. Require religious homeless shelters to comply with the town's building code
- A. I
 - B. III
 - C. I, III
 - D. I, II, III, IV

43. As APA Chapter President, you decide to survey your state's APA planners on the top ten policies that are being used at the local level to address climate change adaptation issues throughout the state. The public participation technique you'd likely use would be:

- A. Delphi technique
- B. Fishbowl planning
- C. Consensus Blogging
- D. Crowdsourcing

44. Which of the following has the largest FAR?

- A. A 20-story building on a 4-acre lot
- B. A 4-story building on a $\frac{1}{4}$ acre lot
- C. A 12-story building on a 3-acre lot
- D. A 2-story building on a $\frac{1}{2}$ acre lot

45. You are the lead planner for the local district of the Army Corps of Engineers assigned to set up NEPA-required EIS public participation for a major Section 404 dredge and fill permit. Under NEPA, public involvement for an EIS is required:

- A. During all processes following the issuance of the Record of Decision
- B. At the draft EIS stage and prior to the final EIS
- C. According to the Army Corp's procedures
- D. At the scoping meeting, at the draft EIS stage and prior to the final EIS

46. Your coastal county has suddenly been experiencing explosive growth, coupled with the current inability of your local government to fund needed infrastructure to support that new growth. However, because of the ongoing gentrification and rising house prices, your community has also been experiencing significant difficulties with the availability of housing for senior citizens, students, and public workers (i.e. teachers, fire fighters, police, etc.). The Planning Director has been directed to find a solution to these issues, and she assigns you to bring back recommendations on how to resolve these issues within the next two weeks. Among your recommendations would be analyses of the following tools:

- I. Requiring new development to be totally responsible for all needed infrastructure
 - II. Allowing accessory housing
 - III. Constructing public housing
 - IV. Passing new development impact and linkage fees
- A. I, IV
 - B. II, IV
 - C. I, III, IV
 - D. I, II, III, IV

47. Your City's citizens have developed a very strong anti-development sentiment in opposition to much of the Planning Department's proposed comprehensive plan changes that would allow additional development within the community. As the Lead Planner, you have been assigned to develop a strategy for assessing and addressing the concerns of the residents opposing growth. Nationally, the typical top two reasons Americans oppose development in their communities appear to be:

- I. Too Much Traffic
 - II. Protecting Home Value
 - III. Protecting the Environment
 - IV. Protecting Community Character
- A. I, II
 - B. II, III
 - C. I, III
 - D. I, III, IV

48. The Telecommunications Act of 1996:

- I. Preempts local regulation of cell tower radio frequency emission effects
 - II. Requires zoning decisions be in writing and supported by substantial evidence
 - III. Preempts the state regulation of cell towers
 - IV. Requires local decisions be based on expert testimony
- A. I, II
 - B. III, IV
 - C. I, II, IV
 - D. I, II, III, IV

49. The Johnson Air Force base in Levy County is being increasingly impacted by new surrounding development that is quickly conflicting with the military base's primary training mission, and creating potential safety issues. The County, in conjunction with the Air Force Base Commander, decides to immediately begin planning to address base compatibility issues, and undertakes those efforts by utilizing the following tools in the following order (from first to last):

- I. AICUZ/JLUS
- II. Amortization
- III. Moratorium
- IV. Military Overlay adoption

- A. I, IV, III, II
- B. I, III, IV, II
- C. III, I, IV, II
- D. III, II, I, IV

50. The Oregon Model is framed by the following four questions of the steps to undertake in the Visioning process, in the following order (from first to last):

- I. Where Do We Want to Be?
- II. Where Are We Going?
- III. How Do We Get There?
- IV. Where Are We Now?

- A. IV, II, III, I
- B. I, III, IV, II
- C. IV, II, I, III
- D. I, II, III, IV

51. The Planning Director of your large, metropolitan city desires to establish some regulations to address the burgeoning public street markets and vendors that are increasingly appearing on vacant spaces throughout the city. The Planning Director wants to ensure that the new regulations improve community image, protect shops and restaurants, avoid sidewalk congestion, and reduce the liability of adjacent businesses. Among the many relevant issues the senior planner in charge of drafting the regulations may decide to address is/are:

- I. Restrictions on vending and market locations
- II. Capping the total city number of allowed vendors
- III. Restrictions/prohibitions on certain foods for sale
- IV. Fees and Taxes

- A. I
- B. I, IV
- C. I, II, IV
- D. I, II, III, IV

52. Your small town needs to undertake an extensive citizen involvement process to help develop a vision for the community and lacks the needed in-house expertise to know how to effectively accomplish this. In your role as the Planning Director, you determine that the best option available is:

- A. Define required services and carry out a two-step RFQ-RFP process
- B. Seek advice from the regional planning council
- C. Assign your best senior planner to educate himself in citizen involvement techniques
- D. Ask your local citizen groups for advise

53. The three C's of a good staff report are:

- A. Consistency, Compatibility, Comprehensive
- B. Compliance, Consistency, Compatibility
- C. Compliance, Consistency, Comprehensive
- D. Comprehensive, Consistency, Compatibility

54. Your fast growing county has just completed a major revision to your general plan, including a new capital improvements program. The new CIP would likely address:

- I. Land purchases, jails, tennis courts
 - II. Same timeframes as the budget
 - III. Pothole repairs, library books, fire hoses
 - IV. Concurrency
- A. II, III
 - B. I, II, III
 - C. I, IV
 - D. I, II, III, IV

55. Digital signs have become all the rage in your municipality. As Planning Director you ask your senior staff to revise your existing sign ordinances to address:

- I. Message control
 - II. Amortization
 - III. Illumination
 - IV. No net increase policies
- A. I, II
 - B. III, IV
 - C. II, III, IV
 - D. I, II, III, IV

56. Mark was asked by the local Chamber of Commerce to present his views on economic development versus environmental protection, a topic of great debate in the community. As planning director, Mark has developed a reputation of being an environmentalist, often at odds with the Chamber. Moreover, Mark's job is in serious danger as the planning board lost three of Mark's strongest supporters in yesterday's election, a week after he agreed to speak before the Chamber.

Before the election, Mark had intended to focus on environmental protection from a naturalist's viewpoint. Now, with his job in jeopardy, Mark has decided to shift his focus to the economic benefits of environmental protection. Which of the following best characterizes his decision?

- A. It violates an aspirational principle of the AICP Code of Ethics
- B. It is in violation of the Rules of Conduct of the AICP Code of Ethics
- C. It is not in violation of the AICP Code of Ethics
- D. Both A. and B.

57. Where would you file a charge of misconduct against an AICP member?

- A. The local chapter of the American Planning Association
- B. The Ethics Officer designated by the AICP Commission
- C. The President of the American Planning Association
- D. The President of the American Institute of Certified Planners

58. As the senior planner in the town's planning department, James argued successfully against any further nonresidential development within the town's recharge areas to its public wellfields. Five years later, as a consultant to a national shopping mall developer, James is aggressively pursuing a rezoning of 1,000 acres of land within the town's public water supply recharge areas.

Which of the following choices apply?

- A. Definitely violates the AICP Code of Ethics and Professional Conduct
- B. Possibly violates the AICP Code of Ethics and Professional Conduct
- C. Does not violate the AICP Code of Ethics and Professional Conduct
- D. Insufficient information to respond

59. The city's planning director resigned his position to pursue a career with a small consulting firm. Fed up with one of the planning board's members, a recalcitrant obstructionist, he ran against her in the next public election for the planning board. He beat her decisively. Which of the following choices apply?

- A. Definitely violates the AICP Code of Ethics and Professional Conduct
- B. Possibly violates the AICP Code of Ethics and Professional Conduct
- C. Does not violate the AICP Code of Ethics and Professional Conduct
- D. Insufficient information to respond

60. The Rules of Conduct of the AICP Code include the following:

- I. We shall not, as public officials or employees, accept from anyone other than our public employer any compensation, commission, rebate, or other advantage that may be perceived as related to our public office or employment.
 - II. We shall not seek employment for which we are not competent to perform, including elective public office.
 - III. We shall deal fairly with all participants in the planning process. Those of us who are public officials or employees shall also deal evenhandedly with all planning process participants.
 - IV. We shall not file a frivolous charge of ethical misconduct against another planner.
-
- A. I, III
 - B. I, IV
 - C. I, III, IV
 - D. I, II, III, IV

Thank you to Henry Bittaker, AICP, Michael Harper, FAICP, Veronica Tam, AICP and Kathy Reilly, AICP for contributing to the AICP Exam illustrative questions.

Answer Key

1	B	21	B	41	D
2	A	22	C	42	B
3	C	23	D	43	A
4	A	24	A	44	B
5	D	25	D	45	C
6	C	26	A	46	B
7	D	27	C	47	A
8	C	28	B	48	A
9	B	29	B	49	C
10	B	30	A	50	C
11	C	31	B	51	D
12	C	32	C	52	A
13	C	33	C	53	B
14	A	34	B	54	C
15	B	35	D	55	B
16	C	36	B	56	C
17	D	37	B	57	B
18	C	38	B	58	C
19	D	39	D	59	C
20	A	40	B	60	B